

LIFE HAPPENS *Wine* HELPS

by Ellen & Clark Studio



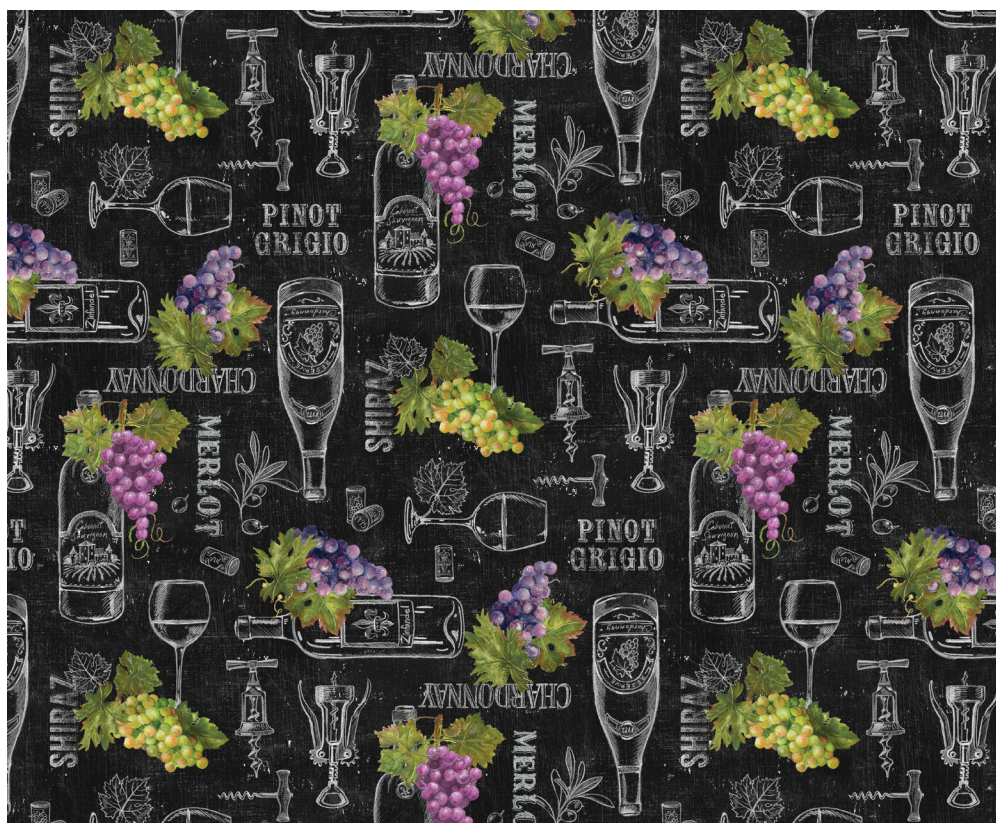
DP24558-99 | Wine Blocks (Running Yardage) | Black Multi



DP24561-99 | Wine Bottles | Black Multi



DP24562-99 | Grapes | Black Multi



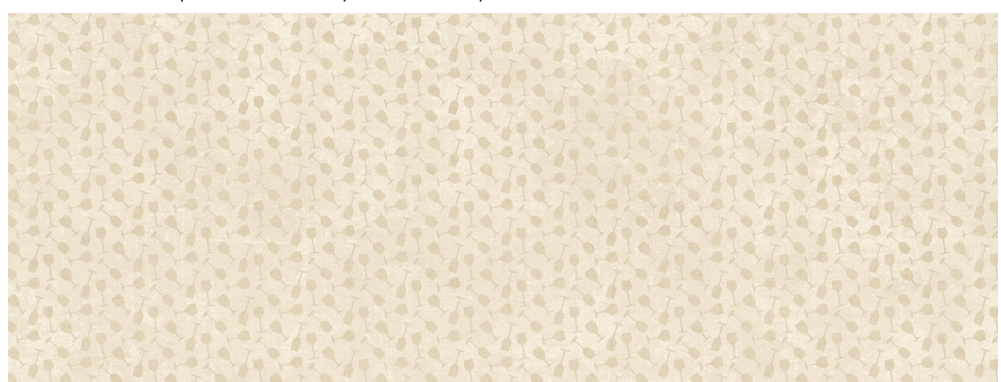
DP24563-99 | Wine and Grapes | Black Multi



DP24559-99 | Reversible Apron Panel | Black Multi



DP24564-12 | Wine Corks | Beige



24568-11 | Wine Glass Blender | Cream



Wine Tote Panel Instructions – Makes 3

Additional Requirements:
 2 1/2 yd Lining Fabric
 24" x 43" Piece of Batting
 All seams are sewn using a 1/4" seam allowance
 Finished Size: Approx. 6"W x 15"H

1/4" seam allowance included

Diagram A:
 - To create boxed bottom, match side & bottom seams and draw a line at the notch mark (see Diagram A). Sew along this marked line. Repeat on other side. Trim both corners 1/4" from the stitch line.

1. Pin full panel together with lining fabric and batting to keep layers from shifting while cutting.
2. Cut out along the edges of each design. Unpin and separate the pieces.
3. Lay each outer piece right side up on batting & pin together. If desired, quilt the outer bag pieces at this stage.
4. Pin lining on top of outer piece, right sides together.
5. Stitch along curved edges. Trim seams to 1/8". Turn right side out and press the curved edges.
6. Fold bag in half so the linings are right sides together.
7. Fold outer pieces and batting up so that right sides of outer pieces meet. The linings are still together and the handle is sandwiched between the outer pieces.
8. Stitch around the side & bottom edges, leaving a 3" opening along one lining side for turning.
9. To create boxed bottom for outer bag piece, match side & bottom seams and pin in place. Draw a line 1-1/4" from the point (see diagram A). Sew along this marked line. Trim 1/4" from the sewn line. Repeat on other corner of the outer bag & on both corners of lining pieces.
10. Turn bag right side out through opening and hand stitch the opening closed (or machine stitch close to the edge).
11. Insert bottle of wine & enjoy!

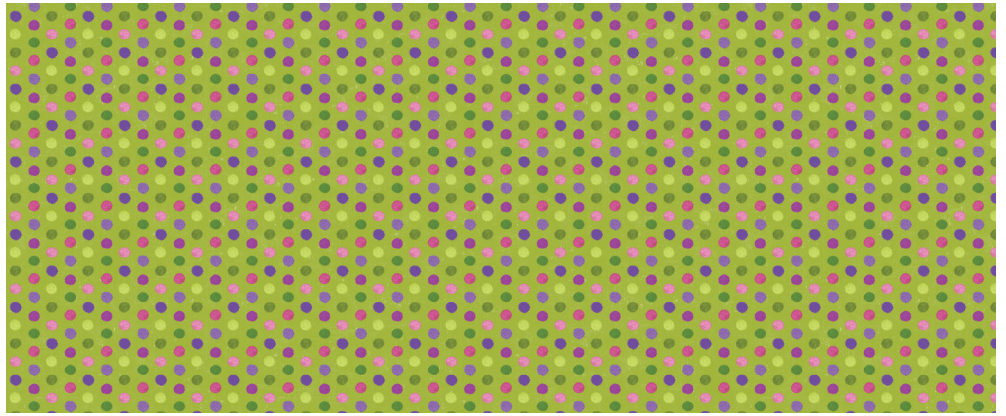
DP24560-99 | Wine Tote | Black Multi



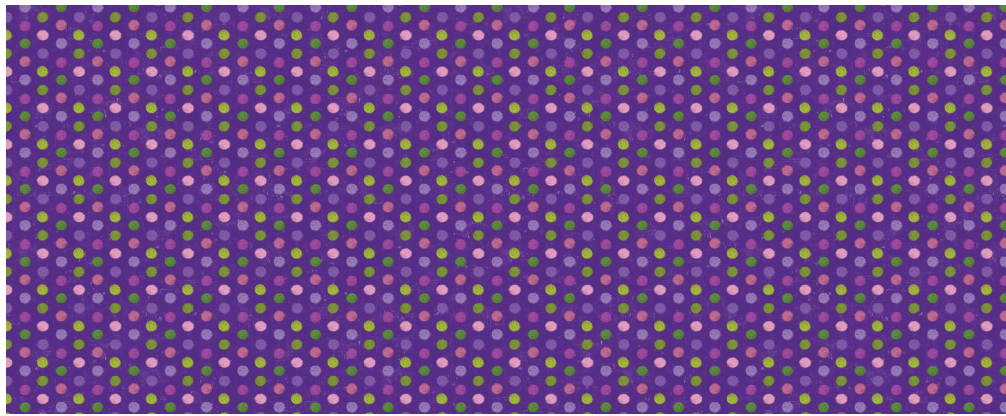
24565-12 | Cork Texture | Beige



24566-99 | Chalk Board Words | Black



24567-74 | Dots | Green Multi



24567-86 | Dots | Purple Multi

LIFE HAPPENS *Wine* HELPS

by Ellen & Clark Studio



Created by talented duo, Ellen and Clark Studio, Life Happens, Wine Helps features beautifully illustrated wine bottles, grapes and corks in a variety of prints. The 43" wide block print is running yardage. Use it as a cheater quilt or deconstruct to use as blocks in any project. The collection also features our new preprinted quick sew wine tote panel with three fabulous designs that make a quick and easy hostess gift your friends will love! Additionally, the collection includes a preprinted reversable apron panel that is super easy to make. You can make the reversable apron with pockets or forego the reverse and make two aprons. A variety of mix and match prints complete the coordination.

The vino inspired palette of purple, plum and green offer a dramatic contrast to the black textured background. A selection of our best-selling Canvas prints match beautifully with the collection. Life Happens, Wine Helps is ideal for a lap quilt and even apparel; slip into p.j. bottoms and snuggle up under your vino inspired lap quilt. The collection is also ideal for a variety of projects including, tabletop items and bags.

Whether you are a connoisseur or simply enjoy a glass of wine now and then, you will want to raise a glass to this collection! When Life Happens, Wine Helps!